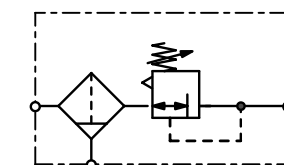


Description	Low-cost aluminium regulator of solid design and diaphragm operating system up to G $\frac{1}{2}$. From G $\frac{3}{4}$ on with piston operating system. Suitable for compressed air or non-corrosive gases.
Supply pressure	max. 16 bar for metal bowl with sight glass, max. 30 bar for metal bowl without sight glass
Adjustment	by knob with snap-lock up to G $\frac{1}{2}$, by hexagon head screw from G $\frac{3}{4}$ up to G1 $\frac{1}{2}$ (BD-1A.) by T-handle from G1 $\frac{1}{2}$ (BD-12.) up to G2
Gauge port	G $\frac{1}{4}$ on both sides of the body, G $\frac{1}{8}$ on both sides of the body at BD-01/02, one screw plug supplied
Filter element	50 μ m, optionally 5 μ m, made of propylene
Bowl	plastic version, standard or short, metal version with or without sight glass
Drainage	semiautomatic drain as standard for max. 16 bar, respectively manual drain max. 30 bar automatic drain max. 16 bar as option
Temperature range	-20 °C to 60 °C / -4 °F to 140 °F for metal bowl with sight glass -30 °C to 80 °C / -22 °F to 176 °F for metal bowl without sight glass
Material	Body: aluminium Elastomer: NBR/Buna-N Bowl: zinc die-cast, stainless steel by BD-12 and -16



G $\frac{1}{8}$ up to G2
5/50 μ m, up to 30 bar

Dimensions			Bowl		Flow rate		P ₁ max.	Filter element	Connection thread	Order number
A	B	C	Design	Capacity	m ³ /h*1	l/min*1	bar	μ m	G	
mm	mm	mm	made of/with	l						

Filter pressure regulator										BD
										with semiautomatic drain, relieving, without pressure gauge, pressure range 0.5...8 bar
40	201	128	metal/sight glass	0.05	27	450	16	50	G $\frac{1}{8}$	BD-01M
			metal	0.05			30			BD-01NH
40	201	128	metal/sight glass	0.05	30	500	16	50	G $\frac{1}{4}$	BD-02M
			metal	0.05			30			BD-02NH
64	251	149	metal/sight glass	0.18	108	1800	16	50	G $\frac{3}{8}$	BD-03M
			metal	0.18			30			BD-03NH
64	251	149	metal/sight glass	0.18			16		G $\frac{1}{2}$	BD-04M
			metal	0.18			30			BD-04NH
129	310	174	metal/sight glass	0.50	300	5000	16	50	G $\frac{3}{4}$	BD-06M
			metal	0.50			30			BD-06NH
129	310	174	metal/sight glass	0.50			16		G1	BD-08M
			metal	0.50			30			BD-08NH
240	310	174	metal/sight glass	0.50	390	6500	16	50	G1 $\frac{1}{4}$	BD-10M
			metal	0.50			30			BD-10NH
240	310	174	metal/sight glass	0.50			16		G1 $\frac{1}{2}$	BD-1AM
			metal	0.50			30			BD-1ANH



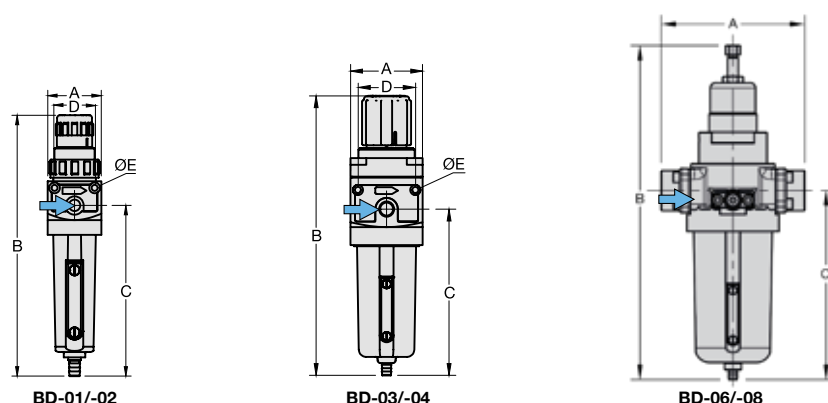
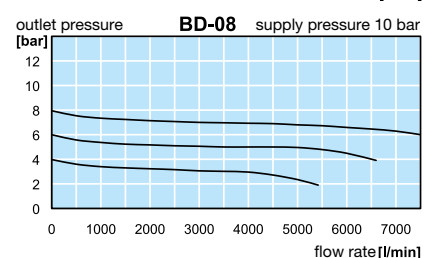
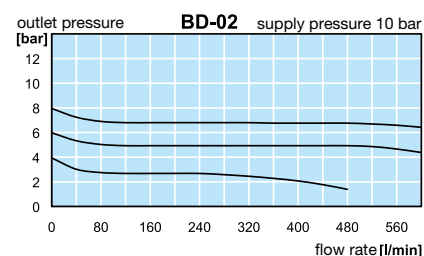
BD-01/-02M



BD-03/-04M



BD-10/-1ANH



*1 at 8 bar supply pressure, 6 bar outlet pressure and 1 bar pressure drop

*2 04 = 0...4 bar, 10 = 0...10 bar, 16 = 0...16 bar

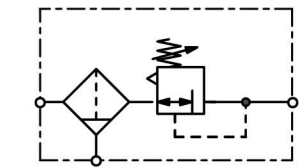
* Product group

Extensions: see chapter for FRL service units
Gauges: see chapter for measuring devices

PDF CAD
www.aircom.net

Order example:
BD-01M

Description	Low-cost aluminium regulator of solid design and diaphragm operating system up to G $\frac{1}{2}$. From G $\frac{3}{4}$ on with piston operating system. Suitable for compressed air or non-corrosive gases.
Supply pressure	max. 16 bar for metal bowl with sight glass, max. 30 bar for metal bowl without sight glass
Adjustment	by knob with snap-lock up to G $\frac{1}{2}$, by hexagon head screw from G $\frac{3}{4}$ up to G1 $\frac{1}{2}$ (BD-1A), by T-handle from G1 $\frac{1}{2}$ (BD-12.) up to G2
Gauge port	G $\frac{1}{4}$ on both sides of the body, G $\frac{1}{2}$ on both sides of the body at BD-01/02, one screw plug supplied
Filter element	50 μ m, optionally 5 μ m, made of propylene
Bowl	plastic version, standard or short, metal version with or without sight glass
Drainage	semiautomatic drain as standard for max. 16 bar, respectively manual drain max. 30 bar automatic drain max. 16 bar as option
Temperature range	-20 °C to 60 °C / -4 °F to 140 °F for metal bowl with sight glass -30 °C to 80 °C / -22 °F to 176 °F for metal bowl without sight glass
Material	Body: aluminium Elastomer: NBR/Buna-N Bowl: zinc die-cast, stainless steel by BD-12 and -16



G $\frac{1}{8}$ up to G2
5/50 μ m, up to 30 bar

Dimensions			Bowl		Flow		P ₁	Filter	Connection	Order
A	B	C	Design	Capacity	rate	max.	max.	element	thread	number
mm	mm	mm	made of/ with	l	m ³ /h*1	l/min*1	bar	μ m	G	

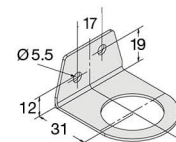
Filter pressure regulator										BD
174	483	213	Metall	1.w0	1380	23 000	30	50	G1 $\frac{1}{2}$	BD-12NH
174	483	213	Metall	1.0	1380	23 000	30	50	G2	BD-16NH



BD-12/-16NH

Special options, add the appropriate letter

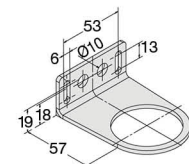
5 μ m filter element	BD-... G
0.3 ... 3 bar regulating range	BD-... B
1 ... 15 bar regulating range	BD-... E
manual drain	max. 16 bar for metal bowls with sight glass BD-... H
automatic drain	max. 16 bar, drainage through float valve for G $\frac{3}{4}$ to G2 BD-... R
flange connection	see chapter for stainless steel devices / flanges BD-... F.



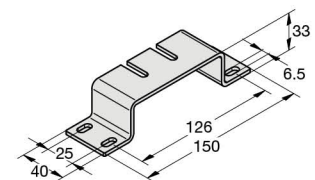
BW30-02

Accessories, enclosed

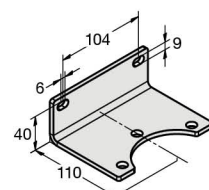
pressure gauge	Ø 40 mm, 0...*2 bar, G $\frac{1}{8}$ Ø 50 mm, 0...*2 bar, G $\frac{1}{4}$ Ø 63 mm, 0...*2 bar, G $\frac{1}{4}$	for G $\frac{1}{8}$ and G $\frac{1}{4}$ for G $\frac{3}{4}$ and G $\frac{1}{2}$ for G $\frac{3}{4}$ up to G2	MA4001-...*2 MA5002-...*2 MA6302-...*2
mounting bracket	made of steel	for G $\frac{1}{8}$ and G $\frac{1}{4}$	BW30-02
mounting nut	made of plastic	for G $\frac{1}{8}$ and G $\frac{1}{4}$	M30x1,5K
mounting bracket	made of steel	for G $\frac{3}{4}$ and G $\frac{1}{2}$	BW50-03
mounting nut	made of plastic	for G $\frac{3}{4}$ and G $\frac{1}{2}$	M50x1,5K
mounting bracket	made of stainless steel	for G $\frac{3}{4}$ up to G1 $\frac{1}{2}$ (1A)	BW00-59S
set of brackets	made of stainless steel	for G1 $\frac{1}{2}$ (12) and G2	BW00-62S



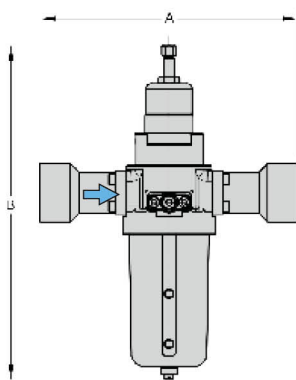
BW50-03



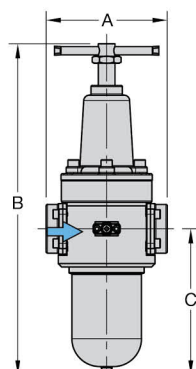
BW00-59S



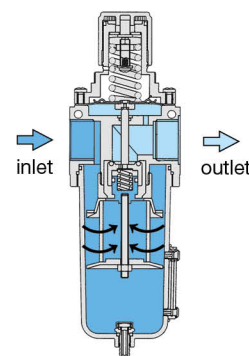
BW00-62S



BD-0/-1A



BD-12/-16



cross-section

*1 at 8 bar supply pressure, 6 bar outlet pressure and 1 bar pressure drop

*2 04 = 0...4 bar, 10 = 0...10 bar, 16 = 0...16 bar

* Product group

Extensions: see chapter for FRL service units
Gauges: see chapter for measuring devices

PDF CAD
www.aircom.net



Order example:
BD-12NH